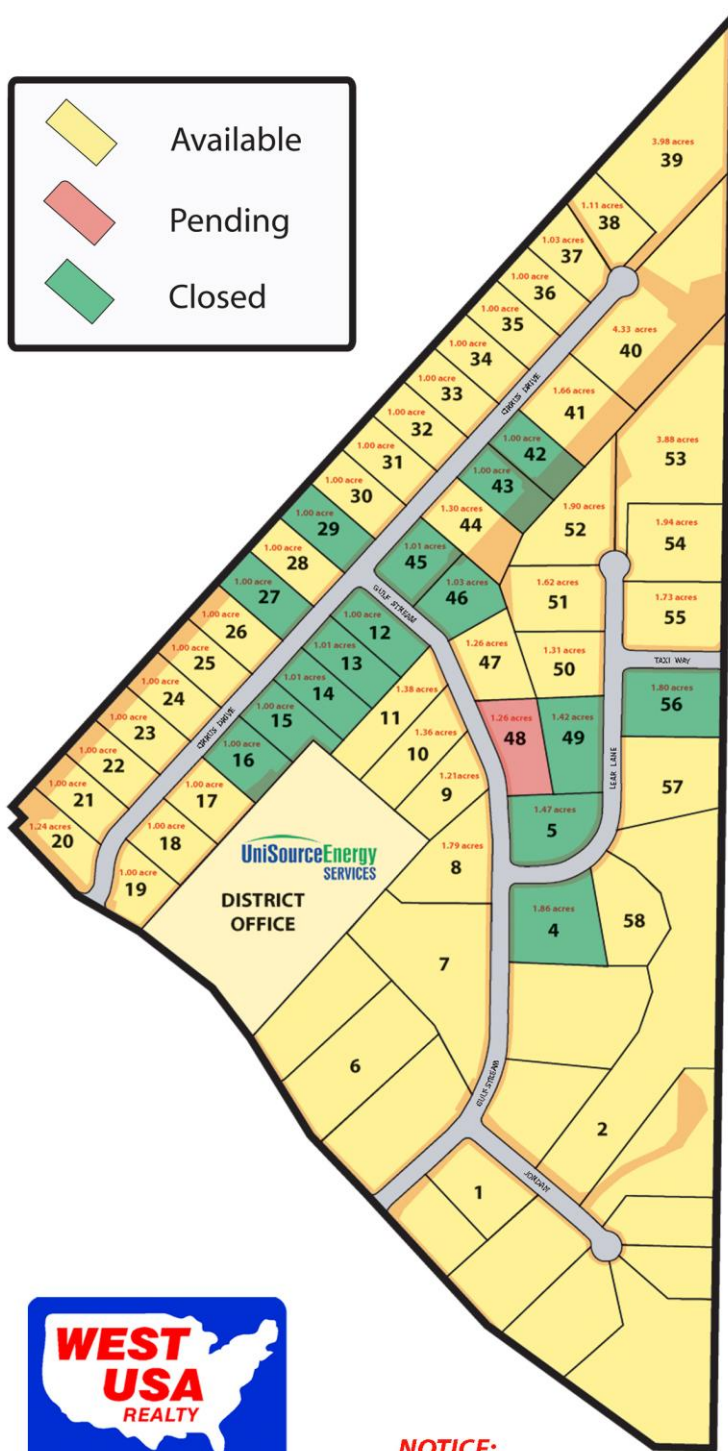
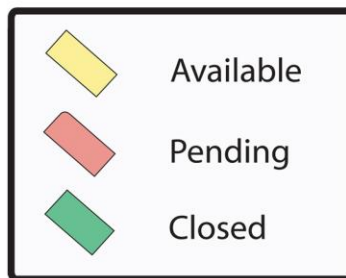


# PRICING

12/05/08

## PRESCOTT'S PREMIER INDUSTRIAL DEVELOPMENT PRESCOTT REGIONAL AIRPARK AND COMMERCE CENTER

LOT #	ACRES +/-	LIST PRICE	STATUS
4	1.86	CLOSED	CLOSED
5	1.47	CLOSED	CLOSED
8	1.79	\$466,525.00	
9	1.21	\$304,300.00	
10	1.36	\$326,950.00	
11	1.38	\$331,700.00	
12	1.00	CLOSED	CLOSED
13	1.01	\$274,000.00	CLOSED
14	1.01	\$274,000.00	CLOSED
15	1.00	CLOSED	CLOSED
16	1.00	CLOSED	CLOSED
17	1.00	\$294,700.00	
18	1.00	\$304,900.00	
19	1.00	\$307,932.00	
20	1.24	\$344,688.00	
21	1.00	\$306,253.00	
22	1.00	\$305,093.00	
23	1.00	\$283,300.00	
24	1.00	\$283,300.00	
25	1.00	\$284,262.00	
26	1.00	\$284,268.00	
27	1.00	CLOSED	CLOSED
28	1.00	\$307,653.00	CLOSED
29	1.00	CLOSED	CLOSED
30	1.00	\$306,160.00	
31	1.00	\$306,167.00	
32	1.00	\$306,350.00	
33	1.00	\$306,350.00	
34	1.00	\$306,350.00	
35	1.00	\$306,360.00	
36	1.00	\$306,360.00	
37	1.03	\$313,900.00	
38	1.11	\$337,386.00	
39	3.98	\$954,050.00	
40	4.33	\$1,038,058.00	
41	1.66	\$396,653.00	
42	1.00	CLOSED	CLOSED
43	1.00	CLOSED	CLOSED
44	1.30	\$312,071.00	
45	1.01	CLOSED	CLOSED
46	1.03	CLOSED	CLOSED
47	1.26	\$350,000.00	
48	1.26	\$328,100.00	PENDING
49	1.42	CLOSED	CLOSED
50	1.31	\$320,000.00	
51	1.62	\$400,000.00	
52	1.90	\$465,000.00	
53	3.88	\$930,000.00	
54	1.94	\$484,700.00	
55	1.73	\$434,303.00	
56	1.80	CLOSED	CLOSED



**NOTICE:**  
All acreage measurements are approximate. The actual lot acreage may vary.

For information please call:  
**Denny Colgan (928) 899-7807**  
**Regina Mitchell (928) 925-8586**  
**Holly Jordan (928) 830-4788**  
 email: [hollyjordan@westusa.com](mailto:hollyjordan@westusa.com)

Lots 1,2,3,6 and 7 will be available Fall 2008.

\* ALL PRICES SUBJECT TO CHANGE